

## **Tumor grade and symptoms at presentation are survival risk factors in Chinese patients with primary retroperitoneal sarcoma**

Aobo Zhuang<sup>1,2,3</sup>, Yuan Fang<sup>4</sup>, Michal Heger<sup>5,6</sup>, Lijie Ma<sup>1</sup>, Jing Xu<sup>1</sup>, Jiongyuan Wang<sup>1</sup>, Weiqi Lu<sup>1</sup>, Hanxing Tong<sup>1</sup>, Yuhong Zhou<sup>7\*</sup>, Yong Zhang<sup>1\*</sup>

1. Department of General Surgery, Zhongshan Hospital, Fudan University, Shanghai, China
2. Xiamen University Research Center, Retroperitoneal Tumor Committee of Oncology Society of Chinese Medical Association, Xiamen University, Xiamen, Fujian, China
3. Department of General Surgery, South Hospital of the Zhongshan Hospital/Shanghai Public Health Clinical Center, Fudan University, Shanghai, China
4. Department of Gastrointestinal Surgery, Shanghai General Hospital Affiliated to Shanghai Jiaotong University, Shanghai, China
5. Jiaying Key Laboratory for Photonanomedicine and Experimental Therapeutics, Department of Pharmaceutics, College of Medicine, Jiaying University, Jiaying, Zhejiang, China
6. Laboratory Experimental Oncology, Department of Pathology, Erasmus MC, Rotterdam, the Netherlands
7. Department of Medical Oncology, Zhongshan Hospital, Fudan University, Shanghai, China

\*Corresponding authors

Yong Zhang

Department of General Surgery, Zhongshan Hospital, Fudan University, 180 Fenglin Road, Shanghai, China

Tel: +86 21 64041990

Email: 13681971072@163.com

Yuhong Zhou

Department of Medical Oncology, Zhongshan Hospital, Fudan University, 180 Fenglin Road, Shanghai, China

Tel: +86 21 64041990

Email: zhou.yuhong@zs-hospital.sh.cn

Article information:

Received: August 10, 2022

Revised: October 13, 2022

Accepted: November 3, 2022

## **Abstract**

**Background and aim:** No cohort studies have been performed on Chinese primary retroperitoneal sarcoma (RPS) patients. Data derived from Western cohort studies may not be directly superimposable on Asian counterparts. Furthermore, the risk factors for survival of RPS are currently unknown for Chinese patients. The objectives were therefore to (1) gain insight into RPS incidence and patient demographics and clinical details; (2) determine the risk factors for overall survival (OS) and disease-free survival (DFS); and (3) critically appraise the Asian cohort data in relation to information obtained in Western cohort studies.

**Methods:** In this retrospective cohort study, the health records of patients that had been diagnosed with primary localized RPS with curative intent between 2009 and 2020 were analyzed. Cox proportional hazards analysis was conducted to evaluate the risk factors for OS and DFS.

**Results:** A total of 261 patients met the inclusion criteria. Ninety-six (36.8%) patients had been diagnosed with well-differentiated liposarcoma, 63 patients (24.1%) with dedifferentiated liposarcoma, 41 patients (15.7%) with leiomyosarcoma (LMS), 22 patients (8.4%) with solitary fibroma, 7 patients (2.7%) with malignant peripheral nerve sheath tumor (MPNST), and 32 patients (12.3%) with another type of RPS. The study further revealed that (1) the 5-y OS and DFS in RPS patients was 67.8% and 51.3%, respectively, with the highest OS and DFS observed in MPNST (100% and 100%, respectively) and the lowest 5-y OS and DFS attributed to LMS (42.6% and 28.9%, respectively); (2) symptoms at presentation, FNCLCC grade, and number of combined resections are independent risk factors in OS; (3) symptoms at presentation, FNCLCC grade, chemotherapy, and hospital length of stay are independent risk factors for DFS; and (4) patients at high risk (symptoms at presentation and high-grade tumors) have less than half the chance of survival at 5 y post-diagnosis than patients with a low-risk profile.

**Conclusions:** Symptoms at presentation constitute a risk factor for OS and DFS. When combined with tumor grade - another risk factor for both OS and DFS - patients can be classified into a high-risk and low-risk category to gauge a patient's prognosis and, accordingly, frame an optimal clinical trajectory. Moreover, the clinicopathology and overall prognosis of RPS in Asian and Western populations are comparable and hence superimposable.

**Relevance for patients:** The present study identifies the risk factors of survival in RPS and suggests symptoms at presentation should be considered in the preoperative consultation and added in prognostic

grouping.

**Keywords:** soft tissue cancer, Asian cohort study, prognosis, univariable and multivariable analysis, hazard ratio, symptoms, asymptomatic, local recurrence, distant metastasis

Epub ahead of print

## 1. Introduction

Retroperitoneal sarcoma (RPS) is a rare malignancy with 0.76 new cases per 100,000 people annually in Europe [1]. Surgery with curative intent constitutes the treatment of choice for primary localized RPS. Studies have demonstrated that tumor size, pathological type, tumor grade, multifocality, number of organs involved in combined multiple organs resection, and complete resection are significant predictors of prognosis after surgery [2,3]. In 2009, a retrospective study conducted by two major European reference centers suggested that surgery with concomitant resection of uninvolved adjacent organs in RPS correlates with improved local tumor control [4,5]. However, surgery beyond the immediate resection margins around the tumor is rather contentious and controversial. Moreover, most research on RPS has been performed on Western populations, while the prognosis for sarcoma patients differs among ethnic groups [6,7]. A small number of cohort studies have been conducted on Asian populations, with relatively small cohort sizes (Taiwan, N = 144; Singapore, N = 108; Singapore, N = 90; Singapore, N = 109 included patients) [8-11]. To date, no cohort studies have been published on Chinese RPS patients. Such studies are therefore needed.

Several reports have suggested that a symptomatic visit to the clinic is a poor prognostic factor for some forms of solid tumors, including lung and gastric cancer [12,13]. RPS is generally deep-seated with a large proportion of patients experiencing compressive non-specific symptoms (e.g., abdominal distension and abdominal pain). Nevertheless, some studies have reported symptoms in RPS at diagnosis [14-18]. Accordingly, the potential prognostic value of symptoms at presentation in primary RPS also warrants further scrutiny.

Therefore, this study investigated the demographics and clinical data of RPS patients in a high-volume Chinese sarcoma center to get insight into the incidence of different RPS subtypes, comorbidities, and treatment course. Moreover, RPS risk factors in terms of overall survival (OS) and disease-free survival (DFS) were analyzed. Finally, the data were juxtaposed to study results obtained in Western patient cohorts.

## **2. Patients and methods**

### *2.1. Patient inclusion and exclusion*

This single center retrospective cohort study was approved by the medical ethics committee of South Hospital of Zhongshan Hospital/Shanghai Public Health Clinical Center under protocol number B2020-338 and was conducted in accordance with the Declaration of Helsinki - Ethical Principles for Medical Research Involving Human Subjects (October 2013 version). All consecutive patients affected by localized primary RPS who had undergone resection with curative intent at the South Hospital of the Zhongshan Hospital/Shanghai Public Health Clinical Center, Fudan University, Shanghai, China from August 2009 to December 2020 were included in the study. Patients diagnosed with Ewing sarcoma, alveolar/embryonic rhabdomyosarcoma, desmoid tumors, gynecologic sarcoma, and gastrointestinal stromal tumors were excluded.

### *2.2. Symptoms, grading, and interventions*

The symptoms that were monitored included abdominal distension, abdominal pain, lumbodorsalgia, lower extreme discomfort, dyspepsia, and others that were classified as such. The histological subtypes included well-differentiated liposarcoma (WDLPS), dedifferentiated liposarcoma (DDLPS), leiomyosarcoma (LMS), malignant peripheral nerve sheath tumor (MPNST), solitary fibroma (SFT), and other subtypes. Tumor grades were assigned using the Federal National Cancer Center (FNCLCC) grading system. Surgical resection was classified as complete resection (R0 or R1) and incomplete resection (R2). Postoperative morbidity was graded using the Clavien-Dindo classification system [19].

### *2.3. Follow-up and recurrence*

The postoperative follow-up included clinical and imaging examination (contrast-enhanced computed tomography or contrast-enhanced magnetic resonance imaging from the chest to the pelvis). Follow-up was standardly performed every 3 mo for the first 2 y postoperatively, every 6 months

thereafter, and once a year after 5 y. Disease recurrence entailed new lesions or marked enlargement of the original lesion(s), both confirmed by imaging. The crude cumulative incidence curves (CCI) for local recurrence (LR) and distant metastases (DM) were calculated in the competitive risk framework. Death without evidence of disease recurrence and DM/LR (whichever occurred first) were considered competing events. When LR and DM concurred, only DM events were counted.

#### *2.4. Data and statistical analysis*

Data were analyzed using SPSS 22.0 (IBM, Armonk, NY, USA) and R 4.0.4 (R Foundation, Indianapolis, IN, USA). Disease-free survival (DFS) and overall survival (OS) rates were determined using Kaplan-Meier plots and analyzed with the log-rank test. The clinicopathological factors for OS and DFS that were significant in univariable Cox proportional hazards analysis ( $P < 0.05$ ) were used as input variables in the multivariable Cox model. Normally distributed continuous data were analyzed using the independent sample t-test, and the Mann-Whitney U test was used for non-Gaussian data sets. Differences between independent categorical variables were analyzed with the  $\chi^2$  test and Fisher's exact test. All tests were two-tailed. A P-value of  $\leq 0.05$  was considered statistically significant.

### **3. Results**

#### *3.1. Complete cohort characteristics*

A total of 261 patients met the inclusion criteria. The median (range) follow-up time for survivors was 40 (2-140) mo. Table 1 lists the patient demographics and medical characteristics. The patient population was comprised of 129 (49.4%) males and 132 (50.6%) females with a median age of 56 y (first and third interquartile range (IQR), 48-64 y). Eighty patients (30.7%) had an ASA score of  $> 1$  and 116 patients (44.4%) exhibited clinical symptoms at first presentation in the hospital. The most common symptom was abdominal distension (32.7%) followed by abdominal pain (31.8%). Lumbodorsalgia, lower extreme discomfort, dyspepsia, and other symptoms accounted for 10.3%, 8.6%, 6.0%, and 10.3%, respectively.

**Table 1.** Demographics and medical characteristics of the retroperitoneal sarcoma study cohort (N = 261).

Characteristics	N	Percentage of total
<b>Gender</b>		
Male	129	49.4
Female	132	50.6
Age (y) median (first and third IQR)	56	48-64
<b>ASA score</b>		
1	181	69.3
> 1	80	30.7
<b>Symptoms</b>		
Yes	116	44.4
No	154	55.6
Tumor burden (cm) median (first and third IQR)	16	9-25
<b>Histologic subtypes</b>		
WDLPS	96	36.8
DDLPS	63	24.1
LMS	41	15.7
SFT	22	8.4
MPNST	7	2.7
Other	32	12.2
<b>FNCLCC</b>		
Grade 1	96	36.8
Grade 2	84	32.2
Grade 3	81	31.0
<b>Multifocality</b>		
Yes	20	7.7
No	241	92.3
<b>Radiation</b>		
Yes	21	8.0
No	240	92.0
<b>Chemotherapy</b>		
Yes	27	10.3
No	234	89.7
<b>Surgical approach</b>		
Laparoscopic surgery	5	2.0
Open surgery	164	98.0
<b>Complete resection</b>		
Yes	253	96.9
No	8	3.1
Number of combined resections, median (first and third IQR)	1	0-3
Operative time (h) median (first and third IQR)	3.7	2.5-4.2
Estimated blood loss (mL) median (first and third IQR)	400	100-850
<b>Packed red blood cell transfusion</b>		

Yes	82	31.4
No	179	68.6
Packed RBC transfusion (units) median (first and third IQR)	4	2-6
Clavien-Dindo classification		
NA	153	58.6
1-2	77	29.6
3-5	31	11.8
Postoperative hospital stay (d) median (first and third IQR)	15	11-22

The median tumor burden was 16 cm (IQR, 9-25 cm). For histologic subtypes, 96 (36.8%) of patients had been diagnosed with WDLPS, 63 patients (24.1%) with DDLPS, 41 patients (15.7%) with LMS, 22 patients (8.4%) with SFT, 7 patients (2.7%) with MPNST, and 32 patients (12.3%) with another RPS subtype. The proportion of patients with FNCLCC grade 1, 2, and 3 was 36.8%, 32.1%, and 31.0%, respectively. Furthermore, 8.0% of patients had received external beam radiation therapy and 10.3% of patients had received chemotherapy. The tumor was completely resected in 96.9% of patients, and the median number of combined resections was 1 (IQR, 0-3). The median operative time was 3.7 h (IQR, 2.5-4.2 h), the median estimated blood loss was 400 mL (IQR, 100-850 mL), and 82 patients (31.4%) were transfused with packed red blood cells. The median length of postoperative hospital stay was 15 d (IQR, 11-22 d).

Postoperative Clavien-Dindo class 3 complications were found in 16 patients (6.1%), 10 patients (3.8%) had class 4 complications, and 5 patients (1.9%) exhibited class 5 complications. Among the five patients who died postoperatively, 2 patients died after reoperation due to severe abdominal infection caused by postoperative intestinal fistula, 2 patients died from cardiovascular events, and 1 patient died from multiple organ failure due to septic shock.

### *3.2. Symptomatic patients had higher grade tumors and experienced a more complicated clinical trajectory*

A higher proportion of symptomatic patients had high-grade tumors ( $P = 0.003$ ), received preoperative radiotherapy ( $P = 0.033$ ), and experienced a longer operation time ( $P = 0.038$ ) compared to asymptomatic patients (Table 2). The symptomatic group was not subjected to more combined organ



resections (median, 2 vs.1, not significant) and comparable perioperative blood loss was noted between groups (median, 500 vs. 300 mL, not significant).

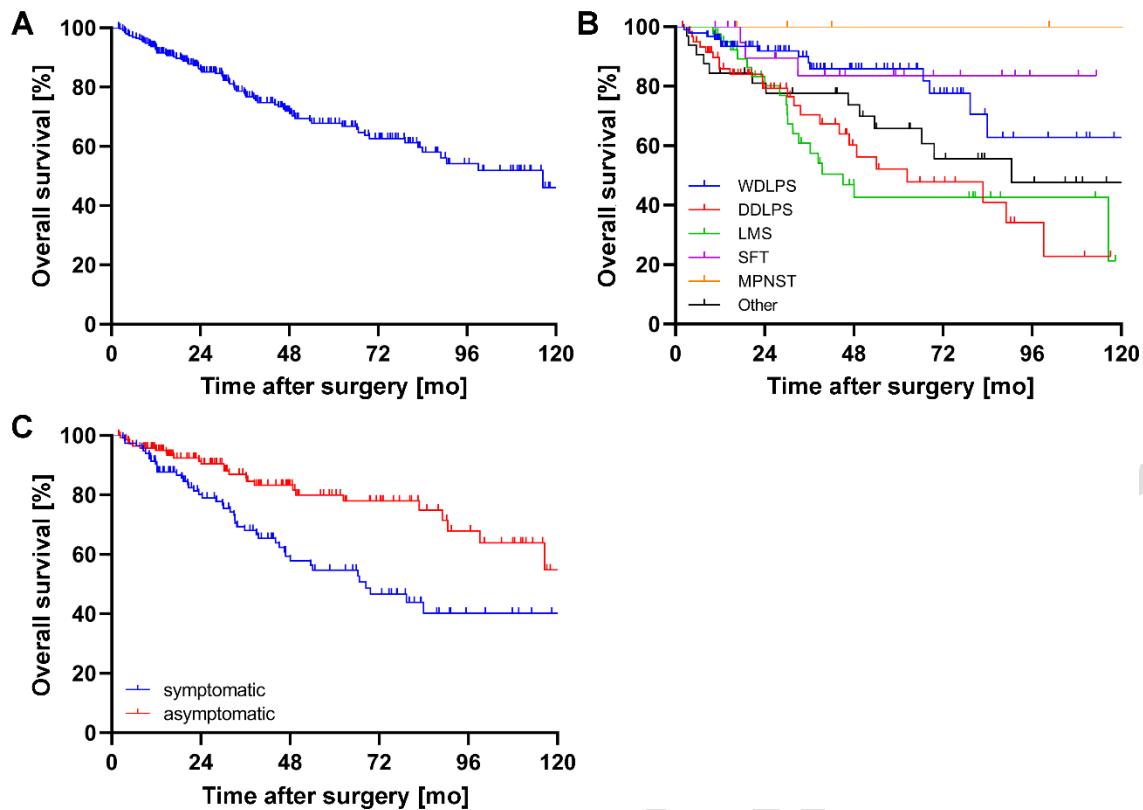
**Table 2.** Demographic and medical characteristics for the symptomatic (N = 116) and asymptomatic (N = 145) patient cohorts.

	Symptomatic group N (%)	Asymptomatic group N (%)	P-value
Gender			0.506
Male	60 (51.7)	69 (47.6)	
Female	56 (48.3)	76 (52.4)	
Age (y) median (first and third IQR)	55 (46-64)	56 (49-64)	0.758
ASA score			0.696
1	79 (68.1)	102 (70.3)	
> 1	37 (31.9)	43 (29.7)	
Tumor burden (cm) median (first and third IQR)	15.0 (8.2-25.0)	16.0 (9.0-25.0)	0.885
Histological subtypes			0.113
WDLPS	36 (31.0)	60 (41.4)	
DDLPS	26 (22.4)	37 (25.5)	
LMS	24 (20.7)	17 (11.7)	
SFT	8 (6.9)	14 (9.7)	
MPNST	3 (2.6)	4 (2.8)	
Other	19 (16.4)	13 (9.0)	
FNCLCC			<b>0.003</b>
Grade 1	32 (27.6)	63 (43.3)	
Grade 2	36 (31.0)	49 (33.8)	
Grade 3	48 (41.4)	33 (22.8)	
Radiation			<b>0.033</b>
Yes	14 (12.1)	7 (4.8)	
No	102 (87.9)	138 (95.2)	
Chemotherapy			0.220
Yes	15 (12.9)	12 (8.3)	
No	101 (87.1)	133 (91.7)	
Surgical approach			1.000
Laparoscopic surgery	2 (1.7)	3 (2.1)	
Open surgery	114 (98.3)	142 (97.9)	
Complete resection			0.473
Yes	111 (97.7)	142 (97.9)	
No	5 (4.3)	3 (2.1)	
Number of combined resections, median (first and third IQR)	2 (1-3)	1 (0-3)	0.357
Operative time (h) median (first and third IQR)	4.0 (3.0-4.9)	3.0 (2.0-4.0)	<b>0.038</b>
Estimated blood loss (mL) median (first and third IQR)	500 (200-975)	300 (100-800)	0.998

Packed RBC transfusion	4 (2-6)	4 (2-6)	0.136
Yes	42 (36.2)	40 (27.6)	
No	74 (63.8)	105 (72.4)	
Packed RBC transfusion (units) median (first and third IQR)			0.779
Clavien-Dindo classification			0.251
NA	70 (60.4)	83 (57.2)	
1-2	30 (25.8)	47 (32.4)	
3-5	16 (13.8)	15 (10.4)	
Postoperative hospital stay (d) median (first and third IQR)	15 (12-23)	14 (10-22)	0.204

### 3.2. Overall survival is negatively impacted by symptoms at presentation

For the entire cohort, 77 (29.5%) patients were deceased at the last follow-up. After 5 cases of postoperative death were removed, the OS at 1-, 2-, and 5 y was 92.9% (95% CI, 89.8-95.0%), 86.2% (95% CI, 81.7%-90.7%) and 67.8% (95% CI, 60.7-74.9%), respectively (Figure 1A). The 5-y OS for WDLPS, DDLPS, LMS, SFT, MPNST, and other subtypes was 85.8% (95% CI, 77.2-94.4%), 52.2% (95% CI, 35.0-69.4%), 42.6% (95% CI, 24.6-60.6%), 83.5% (95% CI, 66.5-100%), 100.0% (95% CI, N.A.), and 65.8% (95% CI, 48.4-83.2%), respectively (Figure 1B). For the symptomatic and asymptomatic group, the 5-y OS was 54.7% (95% CI, 47.7-65.7%) and 80.0% (95% CI, 71.8-88.2%), respectively (Figure 1C).



**Figure 1.** Overall survival in patients with primary retroperitoneal sarcoma (A) and in patients stratified for (B) histological subtype, and (C) symptomatic vs. asymptomatic at first presentation. Abbreviations: [mo], months; WDLPS, well-differentiated liposarcoma; DDLPS, dedifferentiated liposarcoma; LMS, leiomyosarcoma; SFT, solitary fibroma; MPNST, malignant peripheral nerve sheath tumor.

Table 3 lists the analysis of risk factors for OS. Symptoms at first presentation (HR 1.821,  $P = 0.021$ ), FNCLCC grade (HR 1.252 for grade 2 and 2.756 for grade 3,  $P = 0.021$ ), and number of combined resections (HR 1.276,  $P = 0.021$ ) constituted risk factors for OS in multivariable analysis.

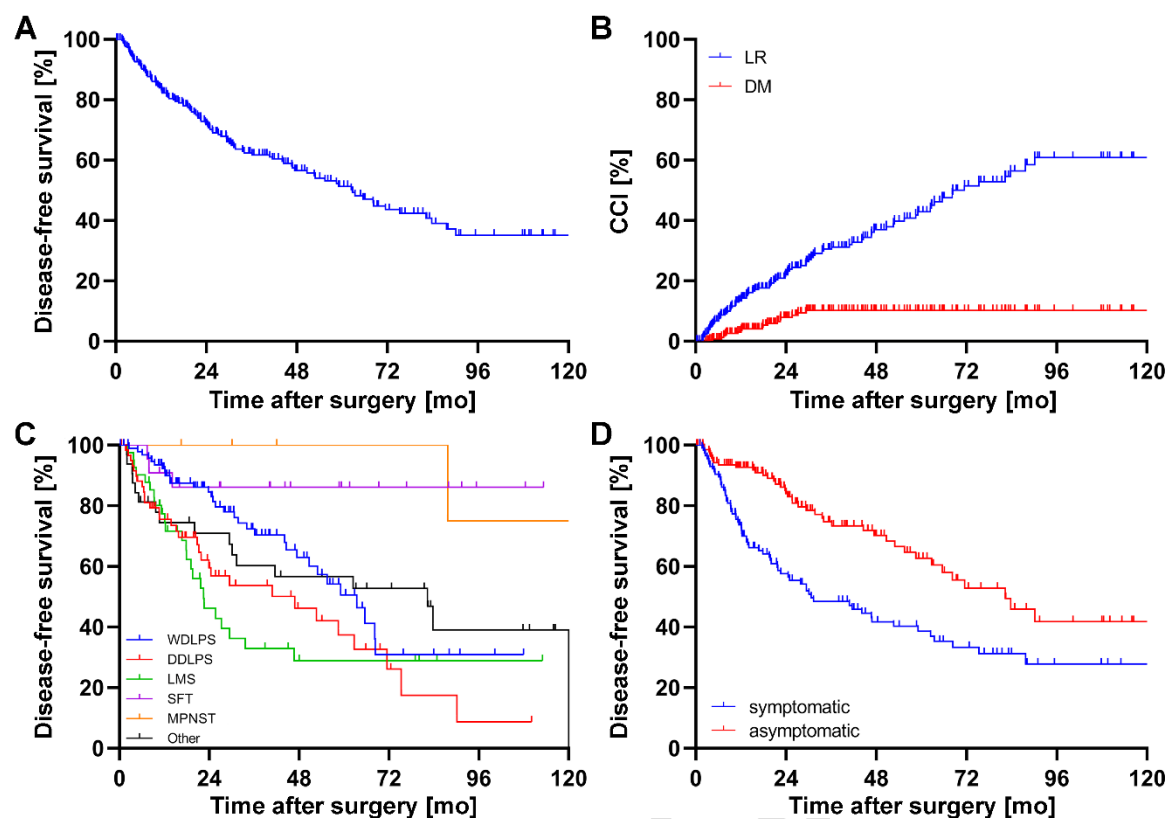
**Table 3.** Univariable and multivariable analyses to determine independent predictors of overall survival of primary retroperitoneal sarcoma.

Variables	Univariable analysis		Multivariable analysis	
	Hazard ratio (95% CI)	P-value	Hazard ratio (95% CI)	P-value
Gender (female vs. male)	0.610 (0.407-1.051)	<b>0.042</b>	0.599 (0.346-1.034)	0.066
Age (continuous)	1.071 (0.998-1.036)	0.072		
ASA score (>1 vs. 1)	1.164 (0.704-1.923)	0.554		
Symptoms (yes vs. no)	2.393 (1.476-3.879)	<b>&lt; 0.001</b>	1.821 (1.095-3.026)	<b>0.021</b>
Tumor burden (continuous)	1.013 (0.991-1.036)	0.241		
Histological subtypes		<b>0.006</b>		0.988
DDLPS vs. WDLPS	2.902 (1.493-5.641)		1.229 (0.510-2.960)	
LMS vs. WDLPS	3.071 (1.540-6.138)		1.094 (0.404-2.962)	
SFT vs. WDLPS	0.719 (0.206-2.505)		0.904 (0.227-3.607)	
MPNST vs. WDLPS	0.000 (0.000-E+195)		0.000 (0.000-E+221)	
Other vs. WDLPS	1.987 (0.931-4.243)		1.404 (0.542-3.640)	
FNCLCC		<b>&lt; 0.001</b>		<b>0.021</b>
Grade 2 vs. grade 1	1.884 (0.936-3.791)		1.252 (0.518-3.023)	
Grade 3 vs. grade 1	4.456 (2.360-8.415)		2.756 (1.067-7.116)	
Radiation (yes vs. no)	0.465 (0.169-1.277)	0.137		
Chemotherapy (yes vs. no)	2.848 (1.581-5.131)	<b>&lt; 0.001</b>	1.990 (0.904-4.384)	0.088
Surgical approach (laparoscopic vs. open)	0.048 (0.000-273.3)	0.492		
Complete resection (no vs. yes)	0.554 (0.332-0.923)	<b>0.023</b>	0.343 (0.105-1.124)	0.077
Number of combined resections (continuous)	1.355 (1.173-1.566)	<b>&lt; 0.001</b>	1.276 (1.037-1.570)	<b>0.021</b>
Operative time (continuous)	1.220 (1.040-1.431)	<b>0.014</b>	0.915 (0.694-1.207)	0.529
Estimated blood loss (continuous)	1.000 (1.000-1.000)	<b>0.003</b>	1.000 (1.000-1.000)	0.701
Packed RBC transfusion (yes vs. no)	2.084 (1.307-3.324)	<b>0.002</b>	1.506 (0.799-2.842)	0.206
Clavien-Dindo classification (3-5 vs. NA/1-2)	2.397 (1.287-4.463)	<b>0.006</b>	1.479 (0.671-3.260)	0.332
Postoperative hospital stay (continuous)	1.021 (1.010-1.033)	<b>&lt; 0.001</b>	1.002 (0.992-1.025)	0.332

*3.3. Disease-free survival depends on retroperitoneal sarcoma subtype and is shorter in symptomatic patients*

For the whole group, 108 (41.4%) patients relapsed. The median time to recurrence was 19.6 (95% CI, 12.7-25.5) mo, and the DFS at 1-, 2-, and 5 y was 84.0% (95% CI, 79.5-88.5%), 71.8% (95% CI, 65.9-77.7%), and 51.3% (95% CI, 43.7-58.9%), respectively (Figure 2A). The 5-y CCI for LR and DM was 38.5% (95% CI, 31.2-45.8%) and 8.1% (95% CI, 4.4-11.8%), respectively (Figure 2B). The 5-y DFS rate for WDLPS, DDLPS, LMS, SFT, MPNST, and other RPS subtypes was 50.6% (95% CI, 45.5-65.7%), 37.4% (95% CI, 20.3-54.5%), 28.9% (95% CI, 12.8-45.0%), 86.1% (95% CI, 71.6-100%), 75.0% (95% CI, 32.5-100%), and 56.7% (95% CI, 38.9-74.5%), respectively (Figure 2C). The 5-y DFS was 40.3% (95% CI, 30.1-50.5%) and 62.7% (95% CI, 51.7-73.7%) for the symptomatic and asymptomatic group, respectively (Figure 2D).

Table 4 lists the analysis of risk factors for DFS. The result indicated that the symptoms at the visit (HR 1.928, P = 0.002), FNCLCC grade (P = 0.026), chemotherapy (HR 2.828, P = 0.001), and postoperative hospital stay (HR 1.022, P = 0.001) were significantly correlated with DFS in multivariable Cox analysis.



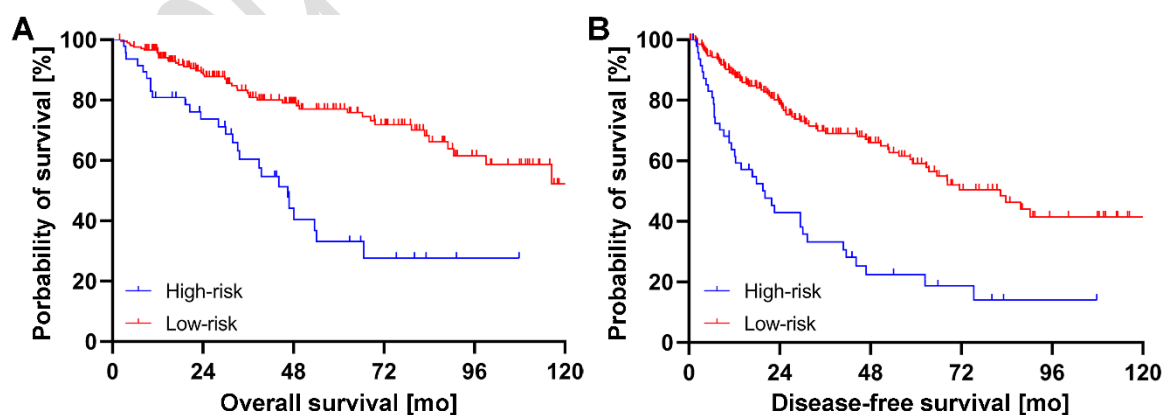
**Figure 2.** Disease-free survival in patients with primary retroperitoneal sarcoma (A) and in patients stratified for (B) local recurrence and distant metastasis, (C) histological subtype, and (D) symptomatic vs. asymptomatic presentation. Abbreviations: [mo], months; CCI, crude cumulative incidence; LR, local recurrence; DM, distant metastasis; WDLPS, well-differentiated liposarcoma; DDLPS, dedifferentiated liposarcoma; LMS, leiomyosarcoma; SFT, solitary fibroma; MPNST, malignant peripheral nerve sheath tumor.

**Table 4.** Univariable and multivariable analyses to determine independent predictors of disease-free survival of primary retroperitoneal sarcoma.

Variables	Univariable analysis		Multivariable analysis	
	Hazard ratio (95% CI)	P-value	Hazard ratio (95% CI)	P-value
Gender (female vs. male)	0.934 (0.639-1.366)	0.726		
Age (continuous)	1.012 (0.997-1.028)	0.105		
ASA score (> 1 vs. 1)	0.994 (0.652-1.517)	0.979		
Symptoms (yes vs. no)	2.225 (1.506-3.286)	< <b>0.001</b>	1.928 (1.272-2.923)	<b>0.002</b>
Tumor burden (continuous)	1.006 (0.988-1.024)	0.520		
Histological subtypes		< <b>0.001</b>		0.354
DDLPS vs. WDLPS	1.908 (1.163-3.129)		1.055 (0.535-2.080)	
LMS vs. WDLPS	2.152 (1.065-3.659)		1.096 (0.506-2.373)	
SFT vs. WDLPS	0.218 (0.089-0.922)		0.365 (0.107-1.247)	
MPNST vs. WDLPS	0.218 (0.030-1.611)		0.244 (0.032-1.838)	
Other vs. WDLPS	1.122 (0.610-2.064)		0.764 (0.351-1.665)	

FNCLCC		< <b>0.001</b>		<b>0.026</b>
Grade 2 vs. Grade 1	1.619 (0.959-2.733)		1.009 (0.550-1.854)	
Grade 3 vs. Grade 1	3.196 (1.975-5.173)		2.926 (0.947-3.915)	
Radiation (yes vs. no)	0.826 (0.417-1.638)	0.584		
Chemotherapy (yes vs. no)	3.328 (2.012-5.504)	< <b>0.001</b>	2.828 (1.496-5.349)	<b>0.001</b>
Surgical approach (laparoscopic vs. open)	0.586 (0.082-4.209)	0.595		
Complete resection (no vs. yes)	0.787 (0.442-1.400)	0.414		
Number of combined resections (continuous)	1.264 (1.123-1.423)	< <b>0.001</b>	1.152 (0.979-1.356)	0.089
Operative time (continuous)	1.230 (1.081-1.398)	<b>0.002</b>	1.016 (0.823-1.256)	0.880
Estimated blood loss (continuous)	1.000 (1.000-1.000)	<b>0.028</b>	1.000 (1.000-1.000)	0.938
Packed RBC transfusion (yes vs. no)	1.401 (0.943-2.083)	0.095		
Clavien-Dindo classification (3-5 vs. NA/1-2)	1.540 (0.823-2.880)	0.177		
Postoperative hospital stay (continuous)	1.028 (1.017-1.039)	< <b>0.001</b>	1.022 (1.008-1.035)	<b>0.001</b>

FNCLCC grade and symptoms constituted both DFS and OS risk factors. In a subsequent analysis, patients with high-grade tumors (FNCLCC grade 3) and symptoms at presentation were assigned to the high-risk group (N = 48), while the rest were assigned to the low-risk group (N = 213). The 5-y OS was 33.1% (95% CI, 16.6-49.7%) for the high-risk group and 77.1% (95% CI, 70.0-84.2%) for the low-risk group (Figure 3A). The 5-y DFS for patients in high-risk and low-risk group was 22.5% (95% CI, 9.6-35.1%) and 59.1% (95% CI, 50.5-67.7%), respectively (Figure 3B).



**Figure 3.** Overall survival (A) and disease-free survival (B) in patients with primary retroperitoneal sarcoma stratified for risk. Differences between groups in both data sets were significant ( $P < 0.001$ ).

#### 4. Discussion

RPS is a rare but highly heterogeneous disease, accounting for 15% of all soft tissue sarcomas [20]. No retrospective case studies had been published on Chinese RPS patients before, so there was a knowledge gap in terms of incidence, demographics, medical details, and prognostic factors. This gap was filled by the current study, which was performed on the largest Asian cohort to date [8-11]. Our study revealed that (1) the incidence of RPS subtypes proceeded in the order of WDLPS > DDLPS > LMS > other subtypes > SFT > MPNST; (2) the 5-y OS and DFS in Chinese RPS patients was 67.8% and 51.3%, respectively, with the highest OS and DFS observed in MPNST (100% and 100%, respectively) and the lowest 5-y OS and DFS attributed to LMS (42.6% and 28.9%, respectively); (3) symptoms at presentation, FNCLCC grade, and number of combined resections are independent risk factors in OS; (4) symptoms at presentation, FNCLCC grade, chemotherapy, and hospital length of stay are independent risk factors for DFS; and (5) patients at high risk (symptoms at presentation and high-grade tumors) have less than half the chance of survival at 5 y post-diagnosis than patients with a low-risk profile.

A key finding was that patients who presented with symptoms had a significantly worse prognosis. It is known that symptoms constitute a prognostic factor for certain solid cancers [12,13], which has been equivocal in regard to RPS. There are only 5 studies that have investigated the symptoms-prognosis relationship [14-18]. The largest sample size was reported by Xiao et al. [15], which included 57 patients with primary retroperitoneal liposarcoma, who found that that this RPS subtype was correlated with lower DFS in univariable analysis. However, multivariable analysis was not performed due to limited cohort size. In a study by Luo et al. [17] featuring 35 cases of retroperitoneal SFT, the 5-y DFS of symptomatic and asymptomatic patients was 56.4% and 65.0%, respectively, but the difference was not statistically significant. The study was likely underpowered. In 2016, Taguchi et al. [16] concluded that a symptomatic visit is an independent prognostic factor for primary retroperitoneal liposarcoma, but this conclusion was based on a cohort size of only 24 patients. The retroperitoneum encompasses a relatively large, malleable space, so patients with RPS commonly present with a considerable tumor burden that triggers them to visit the doctor. Thus, in the aforementioned studies, the mass effect of the tumor was most likely the chief cause of the symptoms. In this study, however, no difference was observed in the



tumor size between the symptomatic and asymptomatic groups (Table 2). In fact, the symptomatic group was characterized by a higher FNCLCC grade only, whilst combined organ resection, perioperative bleeding, and operative time did not differ between symptomatic and asymptomatic patients. Accordingly, a higher tumor grade seems to be associated with more deleterious tumor biological behavior that is revealed through symptoms at clinical presentation, which in turn negatively affects prognosis. Rapid tumor growth and invasion into neighboring tissues lie at the basis of the symptomatic manifestation. Corroboratively, RPS with organ invasion is associated with worse prognosis [21]. Unfortunately, RPS is often diagnosed during regular check-ups or not acted on in time due to misattribution of symptoms to non-oncological, benign origin (e.g., bloating, which can have numerous other causes). Consequently, patients present at the hospital with advanced tumors, which debilitates effective treatment.

The knowledge that symptoms at presentation comprise a risk factor for survival can be exploited for optimal clinical management in several ways. First, we recommend a comprehensive biopsy for symptomatic patients to ensure greater diagnostic acuity. Given that symptomatic patients have more invasive tumors and a worse prognosis, adjuvant therapy should be considered for certain RPS subtypes (e.g., undifferentiated pleomorphic sarcoma). Second, this study showed that symptomatic patients had a greater tendency to undergo a combined resection of more organs and experience more bleeding during surgery compared to asymptomatic patients, albeit the trends were not statistically significant. Nevertheless, these factors should be taken into account during preoperative work-up, and where necessary, a postoperative transfer to the ICU should be secured. It is important to emphasize that the presence or absence of symptoms should not be the basis for a more aggressive surgical strategy, and that the extent of the resection should be comprehensively considered alongside the surgical exploration, pathological subtype, and other pertinent factors [22]. Third, the postoperative follow-up should be more frequent and profound for the symptomatic patients given the more than doubled probability of death during the 5 y after diagnosis compared to asymptomatic patients.

FNCLCC classification was also an independent risk factor for OS and DFS in the multivariable analysis. Its prognostic role in RPSs has been established [23]. We combined the FNCLCC classification and the symptoms of RPS patients and stratified the patients into a high-risk group and a low-risk group. The 5-y DFS of patients in the high-risk group and the low-risk group was 22.5% (95% CI, 9.6-35.1%) and 59.1% (95% CI, 50.5-67.7%), respectively, whereas the 5-y OS was 33.1% (95% CI, 16.6-49.7%)

and 77.1% (95% CI, 70.0-84.2%), respectively. Accordingly, the combination of the two indicators can be employed to better prognosticate the clinical course of RPS patients and can serve as an evaluation tool for outpatient consultation as well as screening of patients during clinical trial enrollment.

Compared to the multicenter western cohort of 1,007 patients reported by the Trans-Atlantic RPS Working Group in 2016 [3], the Asian cohort (this study cohort) was characterized by a higher proportion of WDLPS (26.1% vs. 36.8%, respectively) and a lower tumor burden (median, 20 vs. 16 cm, respectively). The OS was comparable (5-y OS of 67.0 vs. 67.8%), whereas the Asian cohort had a higher 5-y CCI in terms of LR (25.9 vs. 38.5%, respectively). The DM rate was lower in the Asian cohort (21.0 vs. 8.1%, respectively). Compared with the Memorial Sloan Kettering Cancer Center (MSKCC) cohort of 675 primary RPS [2], the Asian cohort was characterized by a lower age (median, 60 y vs. 56 y, respectively) and a higher incidence of WDLPS (28% vs. 36.1%, respectively), whereas the median tumor size was similar (17 vs. 16 cm, respectively). With respect to prognostic factors, the 5-y disease-specific survival, CCI of LR, and CCI of DM were 69%, 39%, and 24%, respectively, in the MSKCC cohort. Survival was comparable to that of the Asian cohort, whereas the proportion of DM was higher. The lower CCI of DM in the Asian cohort may be ascribed to the higher proportion of WDLPS, since the recurrence of WDLPS is generally local and without DM [24]. Taken together, the clinicopathological characteristics and prognosis of primary RPS patients in the Asian population and Western populations were largely identical.

Our study had several limitations. First, nearly 10% of patients who presented with localized primary RPS were not resected [25] and were excluded from this study, somewhat limiting the generalizability of our findings. Second, due to underrepresentation in our cohort, the findings on rare histological subtypes (e.g., MPNST; N = 7) were difficult to validate.

## **5. Conclusions**

This largest single-center RPS cohort study with Asian patients demonstrated that symptoms at presentation constitute a risk factor for OS and DFS. When combined with tumor grade, patients can be classified into a high-risk and low-risk category to gauge a patient's prognosis and, accordingly, frame an optimal clinical trajectory. Moreover, the clinicopathology and overall prognosis of RPS in Asian and Western populations are comparable and hence superimposable. Most of the study conclusions based on

European and American populations can therefore be applied to Asian populations.

### **Acknowledgements**

This study was approved by the ethics committee of the South Hospital of Zhongshan Hospital/Shanghai Public Health Clinical Center. All patients signed a universal consent form allowing for inclusion in research activities.

Michal Heger was supported by grants from the Dutch Cancer Foundation (KWF project # 10666), a Zhejiang Provincial Foreign Expert Program Grant, Zhejiang Provincial Key Natural Science Foundation of China (#Z20H160031), and a grant for the establishment of the Jiaying Key Laboratory for Photonanomedicine and Experimental Therapeutics.

### **Conflict of interest**

The authors declare that the research was conducted in the absence of any commercial or financial relationships that could be construed as a potential conflict of interest.

## References

- 1 Mastrangelo G, Coindre JM, Ducimetiere F, Dei Tos AP, Fadda E, Blay JY, Buja A, Fedeli U, Cegolon L, Frasson A, Ranchere-Vince D, Montesco C, Ray-Coquard I, Rossi CR. Incidence of soft tissue sarcoma and beyond: A population-based prospective study in 3 European regions. *Cancer* 2012;118:5339-5348.
- 2 Tan MC, Brennan MF, Kuk D, Agaram NP, Antonescu CR, Qin LX, Moraco N, Crago AM, Singer S. Histology-based classification predicts pattern of recurrence and improves risk stratification in primary retroperitoneal sarcoma. *Ann Surg* 2016;263:593-600.
- 3 Gronchi A, Strauss DC, Miceli R, Bonvalot S, Swallow CJ, Hohenberger P, Van Coevorden F, Rutkowski P, Callegaro D, Hayes AJ, Honore C, Fairweather M, Cannell A, Jakob J, Haas RL, Szacht M, Fiore M, Casali PG, Pollock RE, Raut CP. Variability in patterns of recurrence after resection of primary retroperitoneal sarcoma (rps): A report on 1007 patients from the multi-institutional collaborative rps working group. *Ann Surg* 2016;263:1002-1009.
- 4 Gronchi A, Lo Vullo S, Fiore M, Mussi C, Stacchiotti S, Collini P, Lozza L, Pennacchioli E, Mariani L, Casali PG. Aggressive surgical policies in a retrospectively reviewed single-institution case series of retroperitoneal soft tissue sarcoma patients. *J Clin Oncol* 2009;27:24-30.
- 5 Bonvalot S, Rivoire M, Castaing M, Stoeckle E, Le Cesne A, Blay JY, Laplanche A. Primary retroperitoneal sarcomas: A multivariate analysis of surgical factors associated with local control. *J Clin Oncol* 2009;27:31-37.
- 6 Diessner BJ, Weigel BJ, Murugan P, Zhang L, Poynter JN, Spector LG. Associations of socioeconomic status, public vs private insurance, and race/ethnicity with metastatic sarcoma at diagnosis. *JAMA Netw Open* 2020;3:e2011087.
- 7 Lazarides AL, Visgauss JD, Nussbaum DP, Green CL, Blazer DG, 3rd, Brigman BE, Eward WC. Race is an independent predictor of survival in patients with soft tissue sarcoma of the extremities. *BMC Cancer* 2018;18:488.
- 8 Chou YS, Liu CY, Chang YH, King KL, Chen PC, Pan CC, Shen SH, Liu YM, Lin AT, Chen KK, Shyr YM, Lee RC, Chao TC, Yang MH, Chan CH, You JY, Yen CC. Prognostic factors of primary resected retroperitoneal soft tissue sarcoma: Analysis from a single asian tertiary center and external validation of gronchi's nomogram. *J Surg Oncol* 2016;113:355-360.
- 9 Ng DWJ, Tan GHC, Chia CS, Chee SK, Quek R, Farid M, Teo MCC. Tumor biology remains the main determinant of prognosis in retroperitoneal sarcomas: A 14-year single-center experience. *Asia Pac J Clin Oncol* 2017;13:e458-e465.
- 10 Lim HJ, Ong CJ, Skanthakumar T, Mak LYH, Wasudevan SD, Tan JW, Chia CS, Tan GHC, Teo MCC. Retrospective quality of life study in patients with retroperitoneal sarcoma in an asian population. *Health Qual Life Outcomes* 2020;18:270.
- 11 Wong RX, Koh YS, Ong F, Farid M, Tay TKY, Teo M. Applicability of the sarculator and mskcc nomograms to retroperitoneal sarcoma prognostication in an asian tertiary center. *Asian J Surg* 2020;43:1078-1085.
- 12 Polanco D, Pinilla L, Gracia-Lavedan E, Mas A, Bertran S, Fierro G, Seminario A, Gomez S, Barbe F. Prognostic value of symptoms at lung cancer diagnosis: A three-year observational study. *J Thorac Dis* 2021;13:1485-1494.
- 13 Stephens MR, Lewis WG, White S, Blackshaw GR, Edwards P, Barry JD, Allison MC. Prognostic

significance of alarm symptoms in patients with gastric cancer. *Br J Surg* 2005;92:840-846.

14 Ishii K, Yokoyama Y, Nishida Y, Koike H, Yamada S, Kodera Y, Sassa N, Gotoh M, Nagino M. Characteristics of primary and repeated recurrent retroperitoneal liposarcoma: Outcomes after aggressive surgeries at a single institution. *Jpn J Clin Oncol* 2020;50:1412-1418.

15 Xiao J, Liu J, Chen M, Liu W, He X. Diagnosis and prognosis of retroperitoneal liposarcoma: A single asian center cohort of 57 cases. *J Oncol* 2021;2021:7594027.

16 Taguchi S, Kume H, Fukuhara H, Morikawa T, Kakutani S, Takeshima Y, Miyazaki H, Suzuki M, Fujimura T, Nakagawa T, Ishikawa A, Igawa Y, Homma Y. Symptoms at diagnosis as independent prognostic factors in retroperitoneal liposarcoma. *Mol Clin Oncol* 2016;4:255-260.

17 Luo P, Wu Z, Chen S, Yang L, Cai W, Chen Y, Yan W, Wang C. Outcome of patients with primary retroperitoneal solitary fibrous sarcoma. *Int J Clin Oncol* 2020;25:921-928.

18 An JY, Heo JS, Noh JH, Sohn TS, Nam SJ, Choi SH, Joh JW, Kim SJ. Primary malignant retroperitoneal tumors: Analysis of a single institutional experience. *Eur J Surg Oncol* 2007;33:376-382.

19 Dindo D, Demartines N, Clavien PA. Classification of surgical complications: A new proposal with evaluation in a cohort of 6336 patients and results of a survey. *Ann Surg* 2004;240:205-213.

20 Kotilingam D, Lev DC, Lazar AJ, Pollock RE. Staging soft tissue sarcoma: Evolution and change. *CA Cancer J Clin* 2006;56:282-291; quiz 314-285.

21 Strauss DC, Renne SL, Gronchi A. Adjacent, adherent, invaded: A spectrum of biologic aggressiveness rather than a rationale for selecting organ resection in surgery of primary retroperitoneal sarcomas. *Ann Surg Oncol* 2018;25:13-16.

22 Ikoma N, Roland CL, Torres KE, Chiang YJ, Wang WL, Somaiah N, Mann GN, Hunt KK, Cormier JN, Feig BW. Concomitant organ resection does not improve outcomes in primary retroperitoneal well-differentiated liposarcoma: A retrospective cohort study at a major sarcoma center. *J Surg Oncol* 2018;117:1188-1194.

23 Trojani M, Contesso G, Coindre JM, Rouesse J, Bui NB, de Mascarel A, Goussot JF, David M, Bonichon F, Lagarde C. Soft-tissue sarcomas of adults; study of pathological prognostic variables and definition of a histopathological grading system. *Int J Cancer* 1984;33:37-42.

24 Nessim C, Raut CP, Callegaro D, Barretta F, Miceli R, Fairweather M, Blay JY, Strauss D, Rutkowski P, Ahuja N, Gonzalez R, Grignani G, Quagliuolo V, Stoeckle E, Lahat G, De Paoli A, Pillarisetty VG, Canter RJ, Mullen JT, Pennacchioli E, van Houdt W, Swallow CJ, Schrage Y, Cardona K, Fiore M, Gronchi A, Bagaria SP. Analysis of differentiation changes and outcomes at time of first recurrence of retroperitoneal liposarcoma by transatlantic australasian retroperitoneal sarcoma working group (tarpswg). *Ann Surg Oncol* 2021;28:7854-7863.

25 Perhavec A, Provenzano S, Baia M, Sangalli C, Morosi C, Barisella M, Colombo C, Radaelli S, Pasquali S, Callegaro D, Gronchi A, Fiore M. Inoperable primary retroperitoneal sarcomas: Clinical characteristics and reasons against resection at a single referral institution. *Ann Surg Oncol* 2021;28:1151-1157.